

# CIRCUIT CELLAR

THE MAGAZINE FOR COMPUTER APPLICATIONS

August 2010  
Issue 241

## EMBEDDED DEVELOPMENT

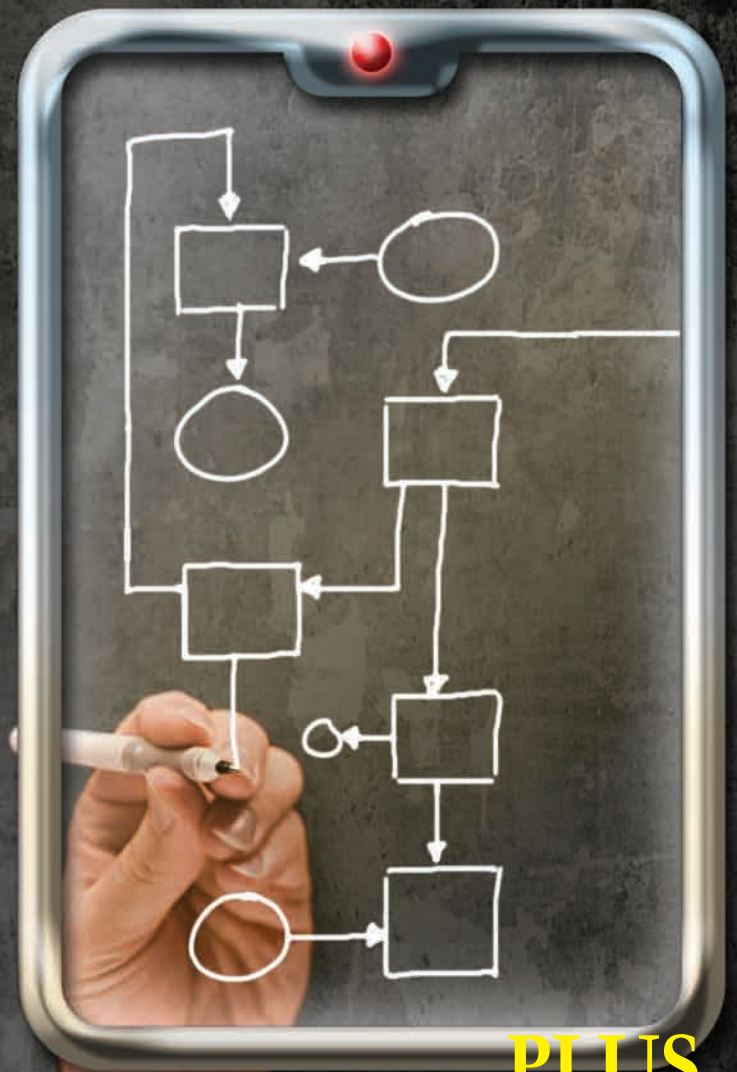
Embedded Safety and  
Failure Mode Analysis

How to Measure a  
Crystal's Properties

Advanced Features  
of USB Explained

An X10 Controller  
Program and Utility

Control How Apps  
Exchange Data



**PLUS**  
**THE MANY TALENTS OF AN**  
**INSTRUMENTATION ENGINEER:**

How One Designer Uses Electronics  
& Embedded Technologies to Solve  
Real-World Problems ... on a Daily Basis



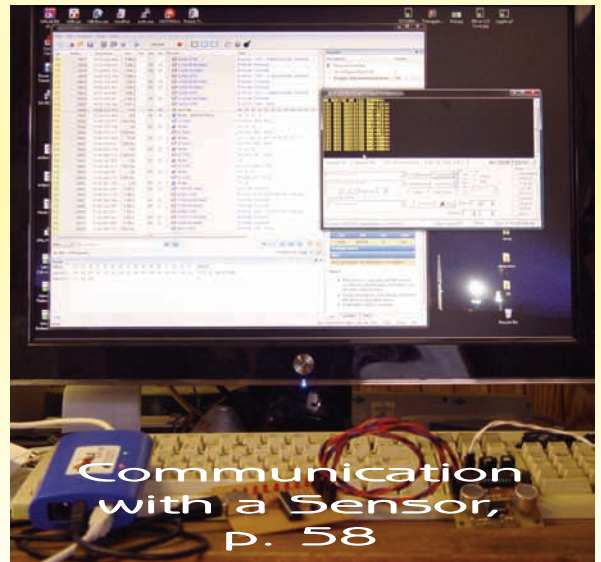
[www.circuitcellar.com](http://www.circuitcellar.com)

# INSIDE ISSUE

# 241

August 2010 • Embedded Development

- 20** **Advanced USB Design Debugging**  
*Colin O'Flynn*
- 28** **The 4-to-20-mA Current Loop**  
*Aubrey Kagan*
- 36** **Build an X10 Controller (Part 2)**  
The Controller Program and Utility  
*Devlin Gualtieri*



- 16** **THE CONSUMMATE ENGINEER**  
Embedded Safety  
*George Novacek*
- 42** **ABOVE THE GROUND PLANE**  
Crystal Properties  
Circuit Models, Measurement, and Conversion  
*Ed Nisley*
- 50** **THE DARKER SIDE**  
A Tour of the Lab (Part 1)  
Time Domain Measurement Equipment  
*Robert Lacoste*
- 58** **FROM THE BENCH**  
Application Communication with USB (Part 3)  
Assembly Code Finale  
*Jeff Bachiochi*
- 66** **SILICON UPDATE**  
MIPS and More  
*Tom Cantrell*

- TASK MANAGER** **4**  
Proactive Engineering  
*C. J. Abate*
- QUESTIONS & ANSWERS** **8**  
Custom Instrumentation Engineering  
An Interview with Brian Millier  
*C. J. Abate*
- NEW PRODUCT NEWS** **12**
- TEST YOUR EQ** **15**
- CROSSWORD** **74**
- INDEX OF ADVERTISERS** **79**  
September Preview
- PRIORITY INTERRUPT** **80**  
Is the Internet Making Us Smarter or Dumber?  
*Steve Ciarcia*