

Dietpi Installation & Basic Configuration

SBC : Raspberry Pi 2 / 3

Audio Hardware : Allo DigiOne

Audio Player : Option 1 – Roon bridge + Roon Server option-2 : Squeezebox server, Squeezelite

Option 1 : The Following is the procedural steps to installation of **Roon bridge** on Dietpi.

Step 1 : Download The latest Dietpi image for **RPI** from the Dietpi official website.

[http://dietpi.com/downloads/images/DietPi_RPi-armv6-\(Jessie\).7z](http://dietpi.com/downloads/images/DietPi_RPi-armv6-(Jessie).7z) (**Raspberrypi**)

Step 2 : Load the Downloaded image into an SD card of size preferably 8Gb or more.

Refer notes on <http://dietpi.com/phpbb/viewtopic.php?f=8&t=9#p9>

Step 3 : Plug the SD card into your device and turn it on.

- Wait for DietPi to complete the filesystem expansion (this will automatically reboot your device 2 times). Once completed, the login screen will appear

Login to DietPi

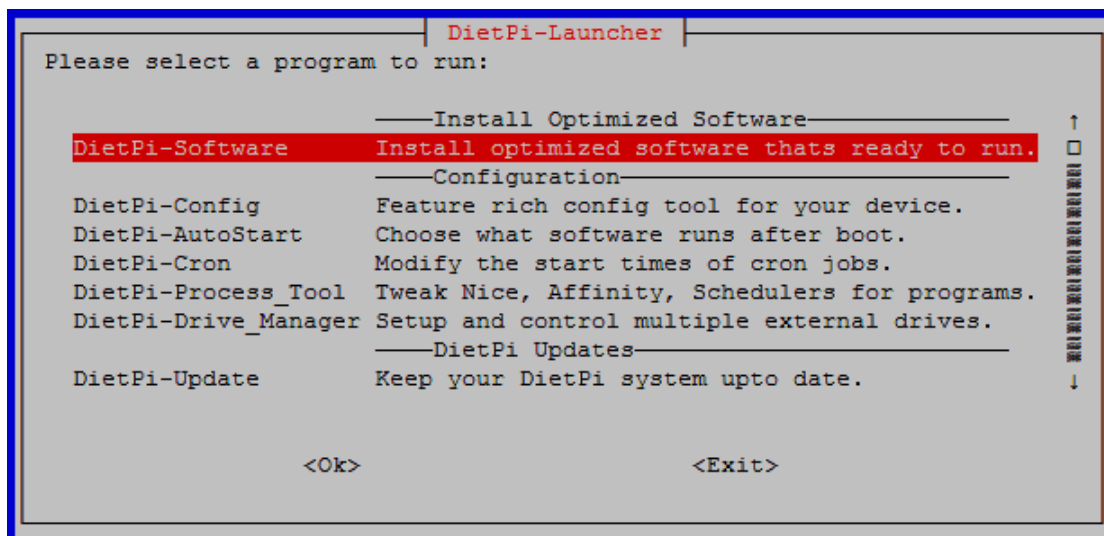
username = root

password = dietpi

Step 4 : **For the** installation of **Roon bridge** on dietpi follow the below steps

Give the command dietpi-launcher to select and install the roon bridge software.

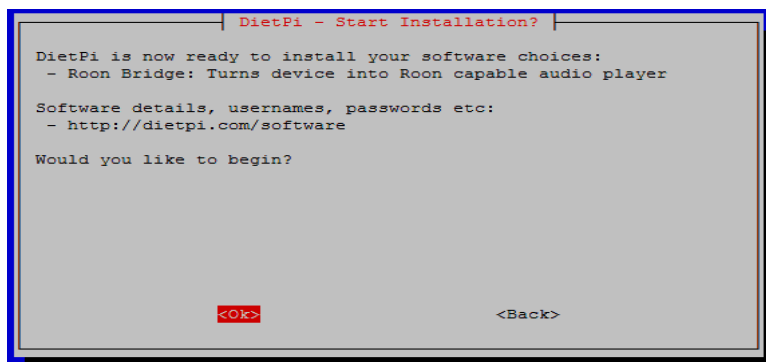
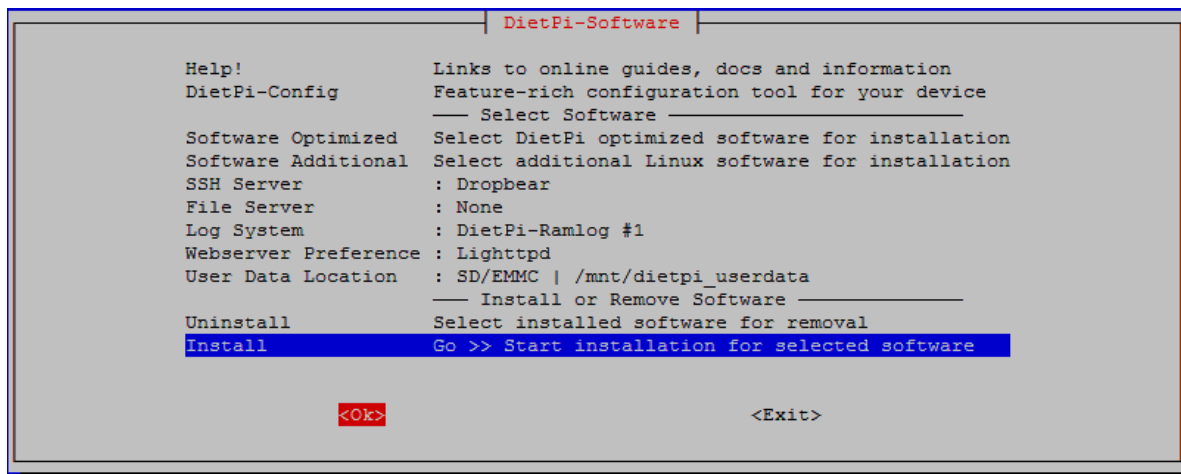
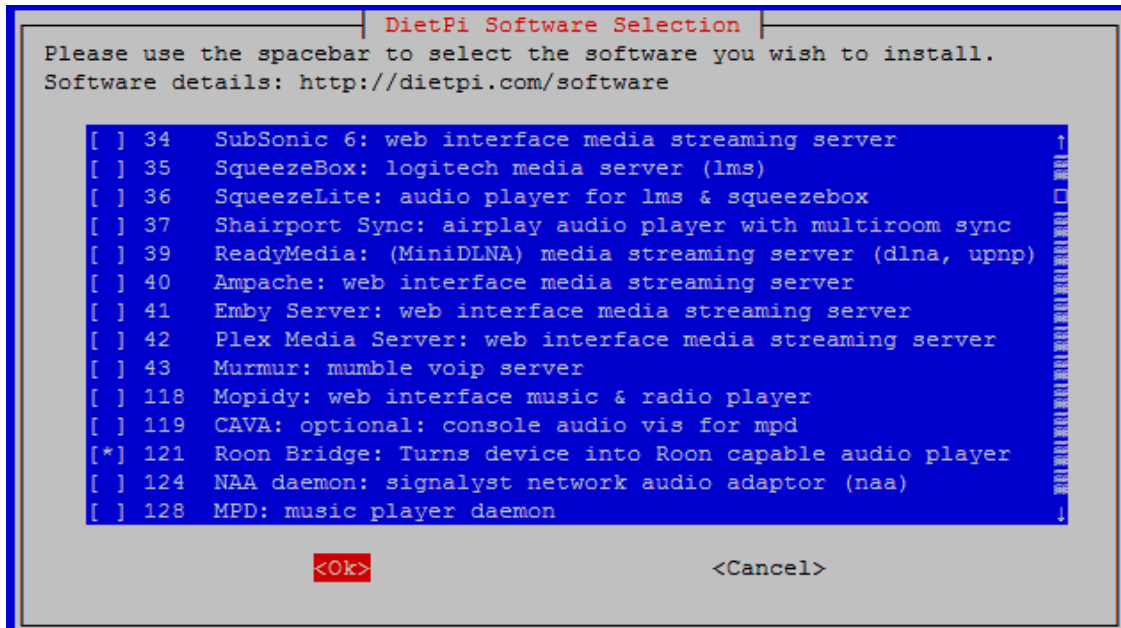
root@DietPi:~# dietpi-launcher



```
DietPi-Launcher
Please select a program to run:

-----Install Optimized Software-----
DietPi-Software  Install optimized software thats ready to run.
-----Configuration-----
DietPi-Config   Feature rich config tool for your device.
DietPi-AutoStart Choose what software runs after boot.
DietPi-Cron     Modify the start times of cron jobs.
DietPi-Process_Tool Tweak Nice, Affinity, Schedulers for programs.
DietPi-Drive_Manager Setup and control multiple external drives.
-----DietPi Updates-----
DietPi-Update   Keep your DietPi system upto date.

<Ok>                <Exit>
```

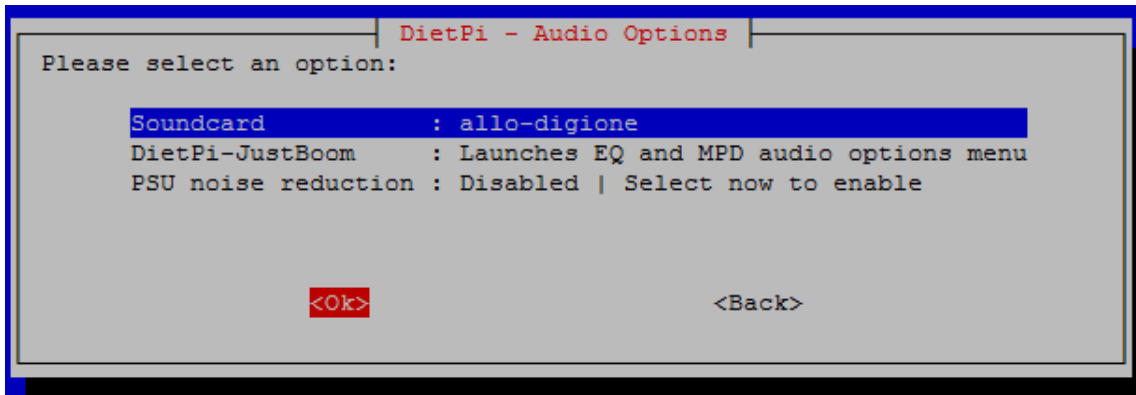
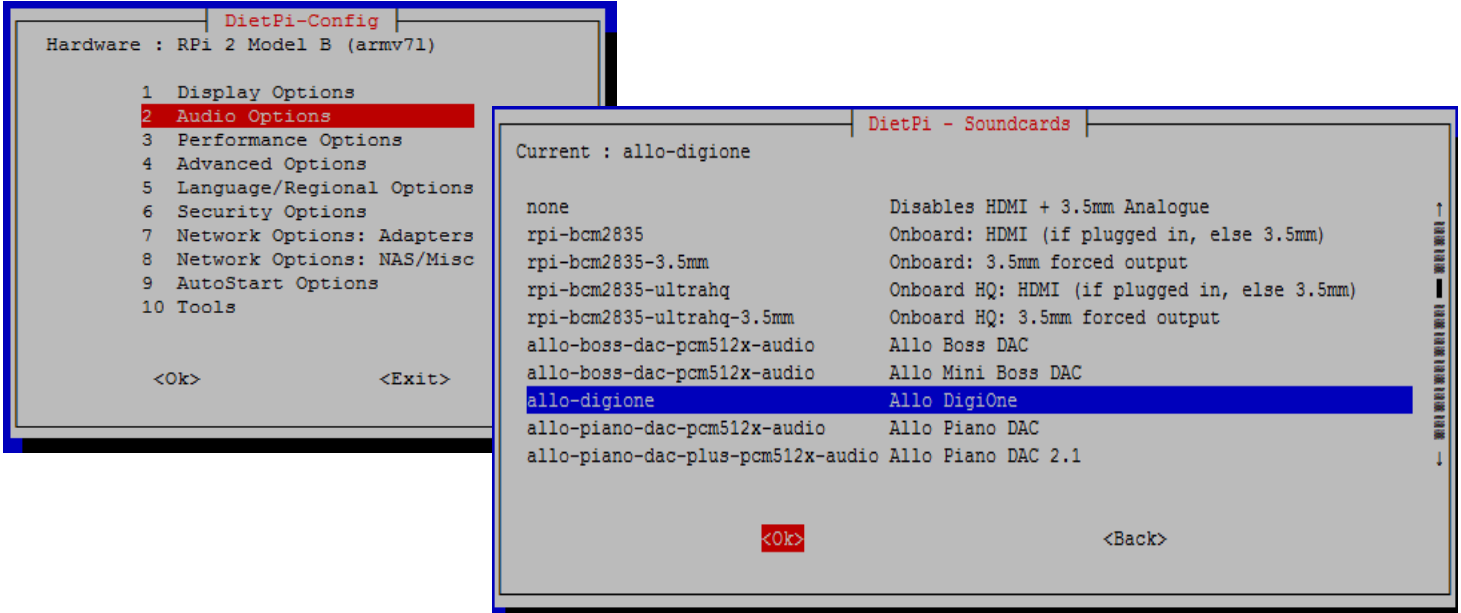


This will take some time to install the selected packages.
Automatically reboots on completion of installation.

Step 5: Configure Audio Hardware

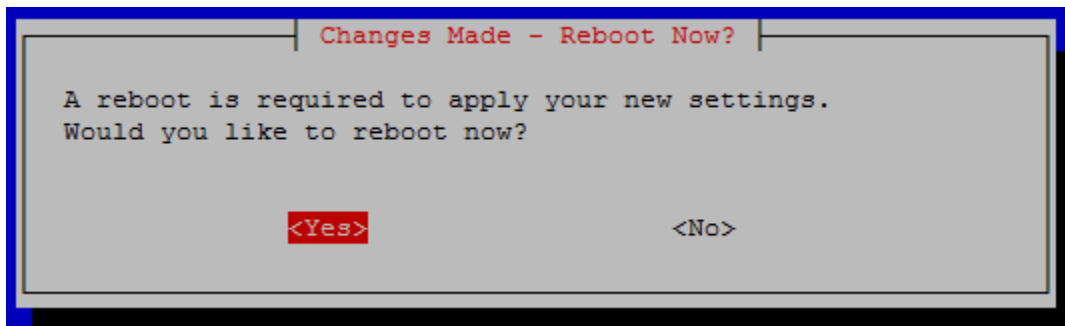
select the DAC attached to your SBC (here example shown as Allo DigiOne with RPI SBC)

root@DietPi:~# dietpi-config



A reboot

required on exit from the configuration to apply the changes.



On successful reboot The roonbridge is ready to work with the selected audio device.

ROON

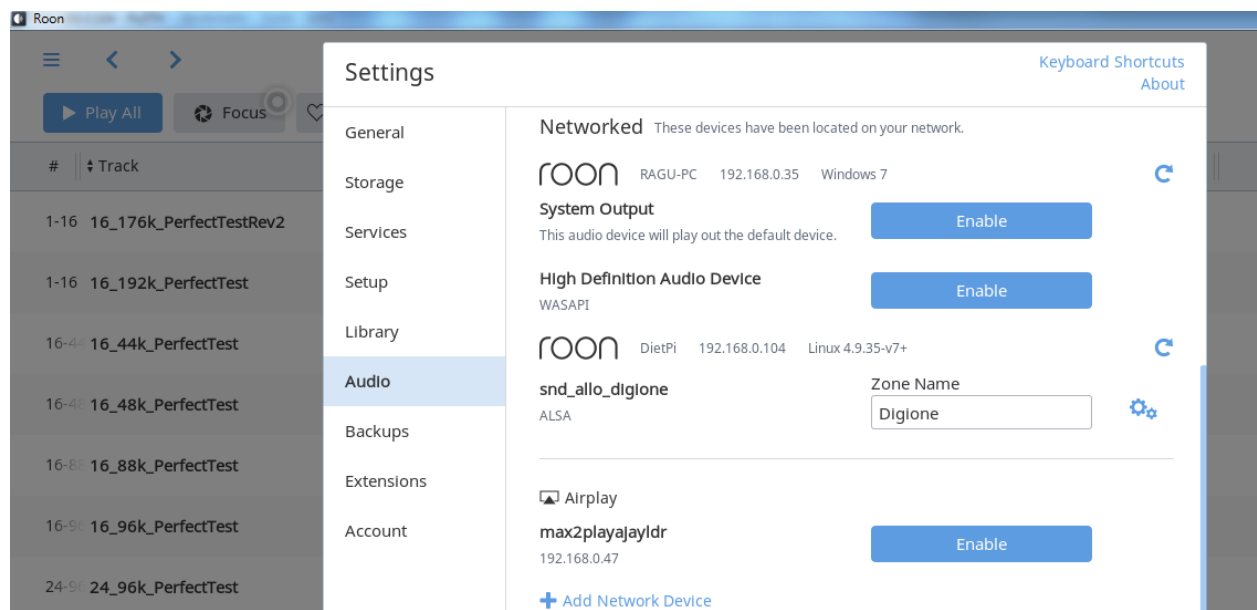
You need to install **ROON (Control + Core + Output)**** on a windows pc or laptop.

** roon membership necessary to install and use.

The detailed description of download procedure can be seen
https://kb.roonlabs.com/Getting_Started
<https://roonlabs.com/downloads.html>

Open Roon application and Enable appropriate audio device listed.

snd_allo_digione




Zones

Audio Setup
Pause All Zones

 **Digione**
 Nothing Playing  

 **headset**
 **Magnificat: Et misericordia**
Nidarosdomens Jentekor, Trondheim Soloists
(TrondheimSolistene), Nidarosdomens jentekor &  

 **system**
 Nothing Playing  

.....
Enable the audio device and check.

Option 2 : The Following is the procedural steps to installation of SqueezeBox, squeezelite packages on Dietpi.

Step 1 : Download the image from Dietpi official website.

Step 2 : Load the Downloaded image into an SD card of size preferably 8Gb or more.

Refer notes on <http://dietpi.com/phpbb/viewtopic.php?f=8&t=9#p9>

Step 3 : Plug the SD card into your device and turn it on.

- Wait for DietPi to complete the filesystem expansion (this will automatically reboot your device 2 times). Once completed, the login screen will appear

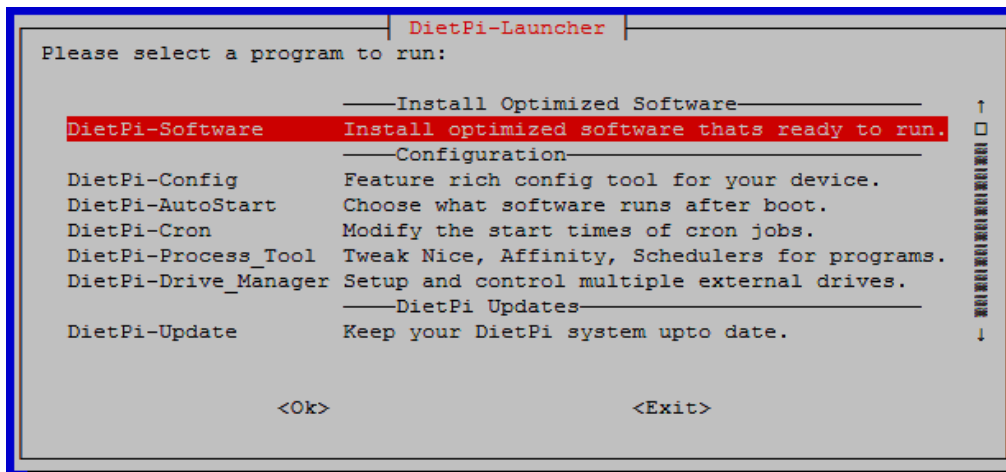
Login to DietPi

username = root

password = dietpi

Step 4 : installation of SqueezeBox, squeezelite packages on Dietpi.

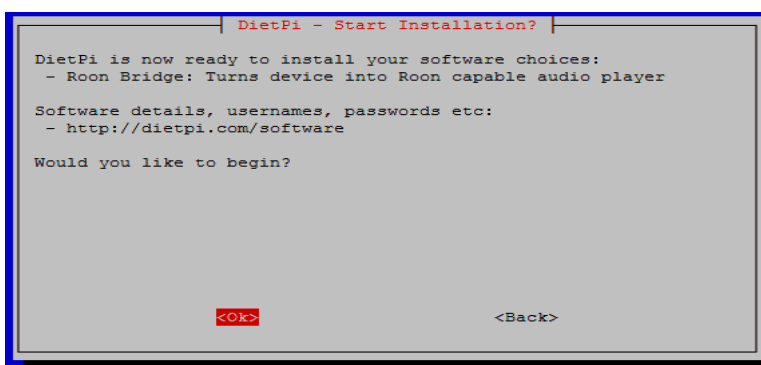
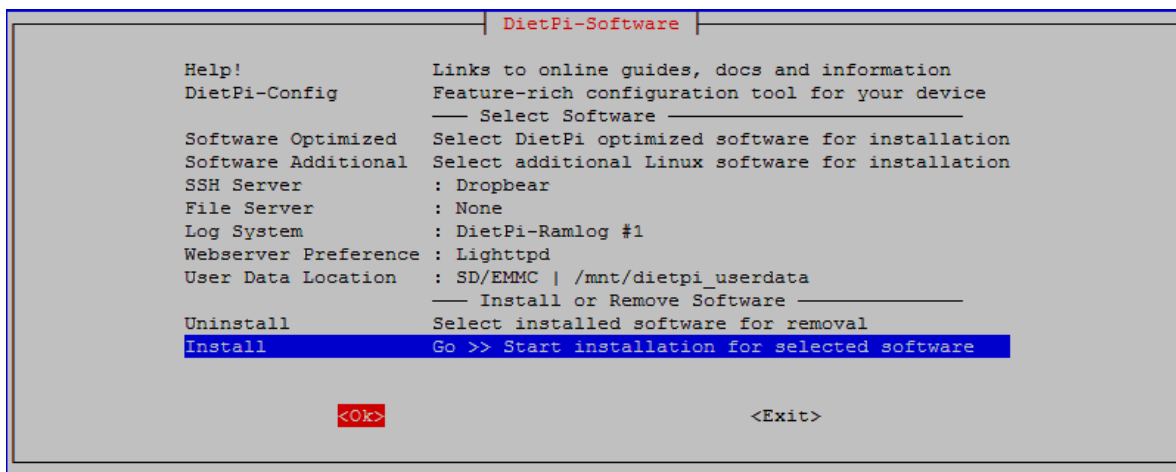
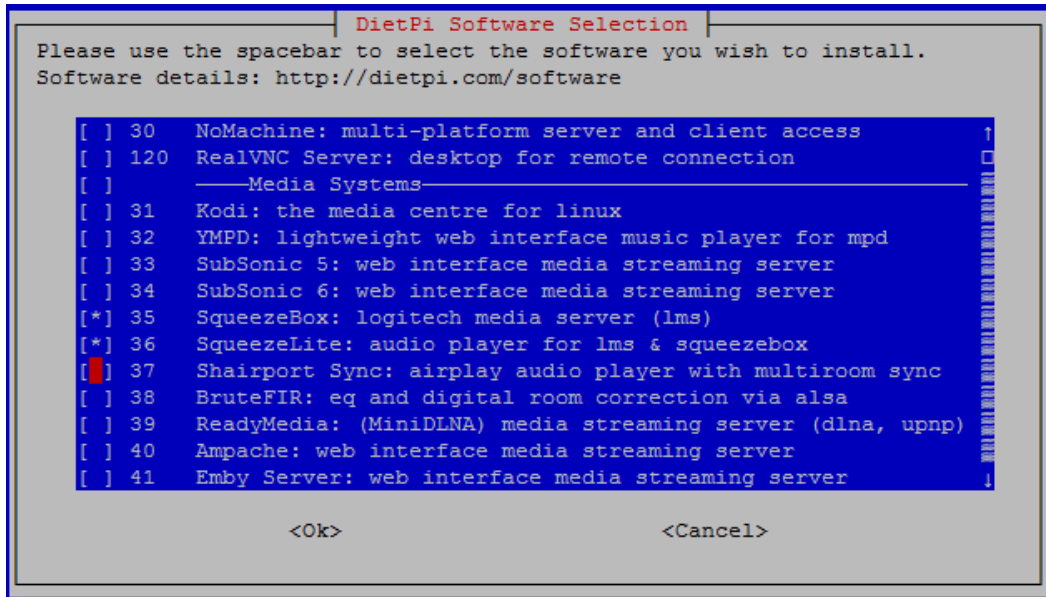
root@DietPi:~# dietpi-launcher



```
DietPi-Launcher
Please select a program to run:

-----Install Optimized Software-----
DietPi-Software  Install optimized software thats ready to run.
-----Configuration-----
DietPi-Config   Feature rich config tool for your device.
DietPi-AutoStart Choose what software runs after boot.
DietPi-Cron     Modify the start times of cron jobs.
DietPi-Process_Tool Tweak Nice, Affinity, Schedulers for programs.
DietPi-Drive_Manager Setup and control multiple external drives.
-----DietPi Updates-----
DietPi-Update   Keep your DietPi system upto date.

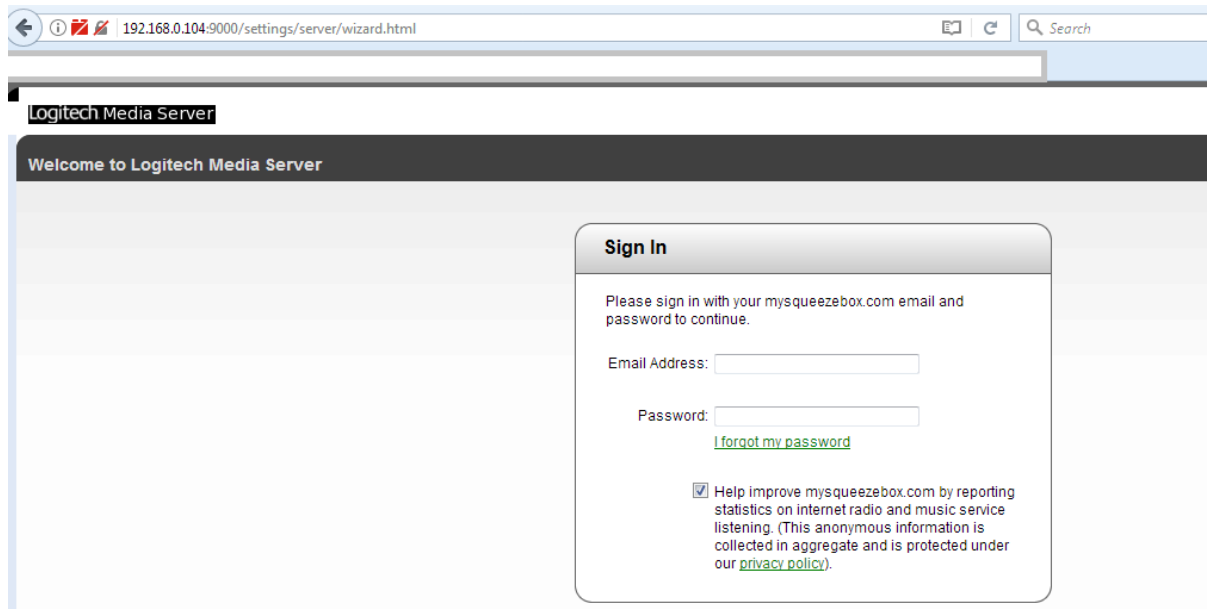
<Ok>                <Exit>
```



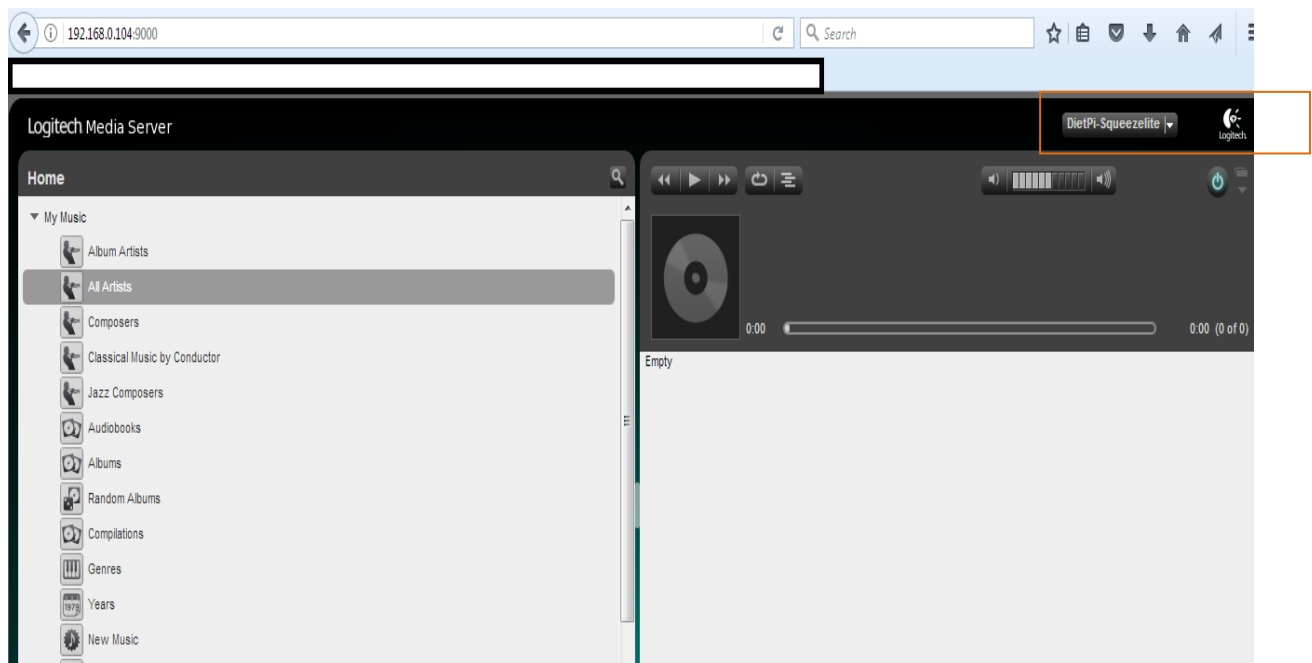
This will take some time to install the selected packages.
Automatically reboots on completion of installation.

Step 5 : Configure audio device on Dietpi same as stated on page 3

Step 6 : On completion of packages Installation, Audio configuration enter the Board IP with LMS default port number (9000) on browser.



sign in with your LMS server account



Select the player on top-right corner of drop-down menu.

refer [http://wiki.slimdevices.com/index.php/Logitech Media Server](http://wiki.slimdevices.com/index.php/Logitech_Media_Server) for more info.